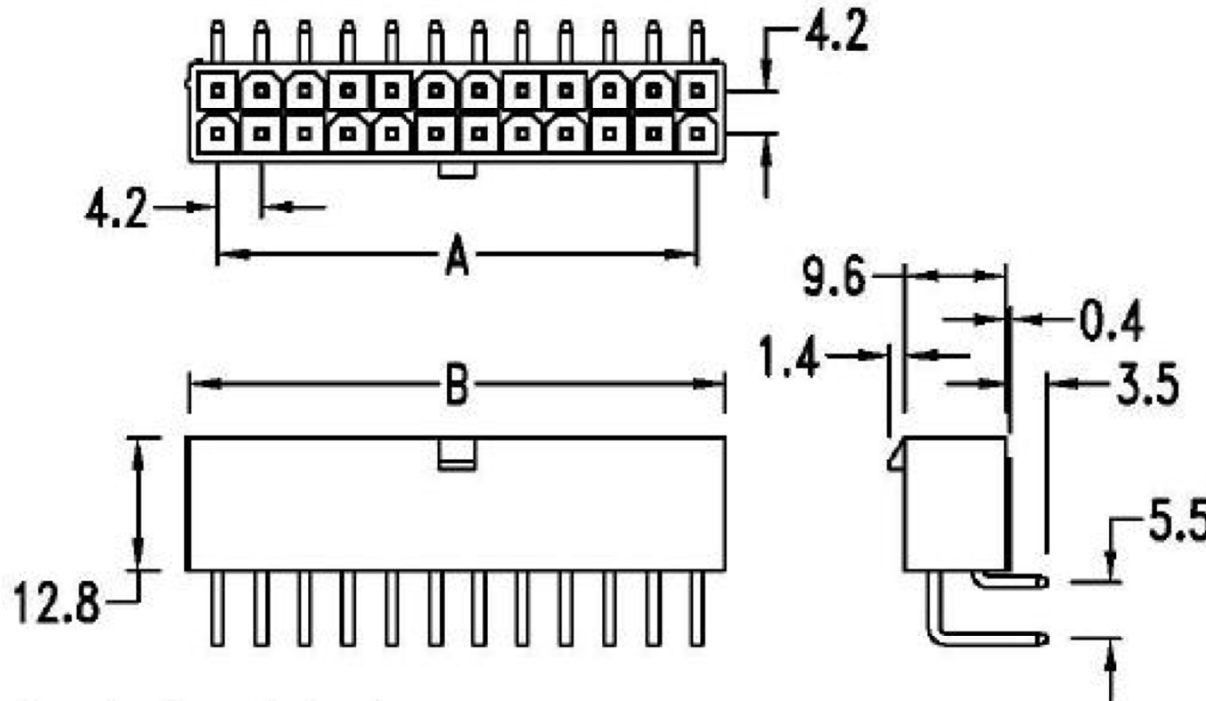


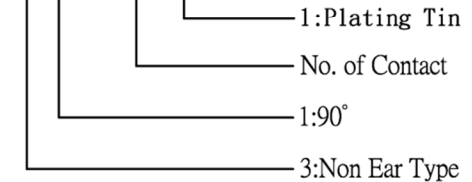
CUSTOMER COPY

REV.	DESCRIPTION	APP.	DATE
A	NEW DESIGN	Amos	2011-04-08



ORDER INFORMATION

1246 3 1 0 XX X



Features:

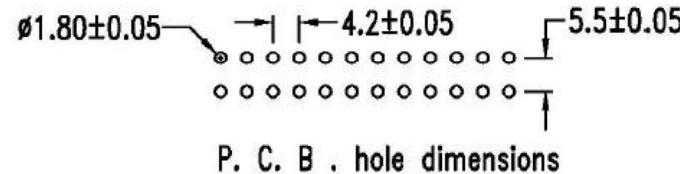
- 2 ~ 24 circuits available
- Material: UL 94V-0 or 94V-2
- Positive housing locks
- Mates with 42001HM-N housing
- Recommended PCB thickness: .07"(1.78mm) Max.

Specifications:

- Voltage rating: 600V AC, DC (R.M.S.)
- Contact resistance: 10mΩ Max.
- Dielectric withstanding voltage: 1500V AC/minute
- Ambient temperature range: -40 °C ~ 105 °C (including temperature rise)


Current rating and wire size:

Wire Size AWG	Circuits			
	2	4, 6	8, 10	12~24
# 18	9 A	8 A	7 A	6 A
# 20	7 A	6 A	5 A	5 A
# 22	5 A	4 A	4 A	4 A
# 24	4 A	3 A	3 A	3 A



Ordering and Dimensional Information ( mm )

Circuits	Dim. A	Dim. B	Circuits	Dim. A	Dim. B	Circuits	Dim. A	Dim. B
2		5.4	10	16.8	22.2	18	33.6	39.0
4	4.2	9.6	12	21.0	26.4	20	37.8	43.2
6	8.4	13.8	14	25.2	30.6	22	42.0	47.4
8	12.6	18.0	16	29.4	34.8	24	46.2	51.6


**鈺滿榮企業股份有限公司 ACMELUX CO., LTD.**  
 TEL:886-2-85124595 FAX:886-2-85124322

0.0±0.40	SCALE: 1:1	TITLE: Pitch 4.2mm 90° Right Angle Molex Type Header Connector	PART NO:
0.00±0.25	UNIT: mm	MATERIAL: RoHS	APP BY: Hung
0.000±0.1			CHK BY: Cheryl
DWG. NO. C1246310XXX		DR BY: Amos	A303

